







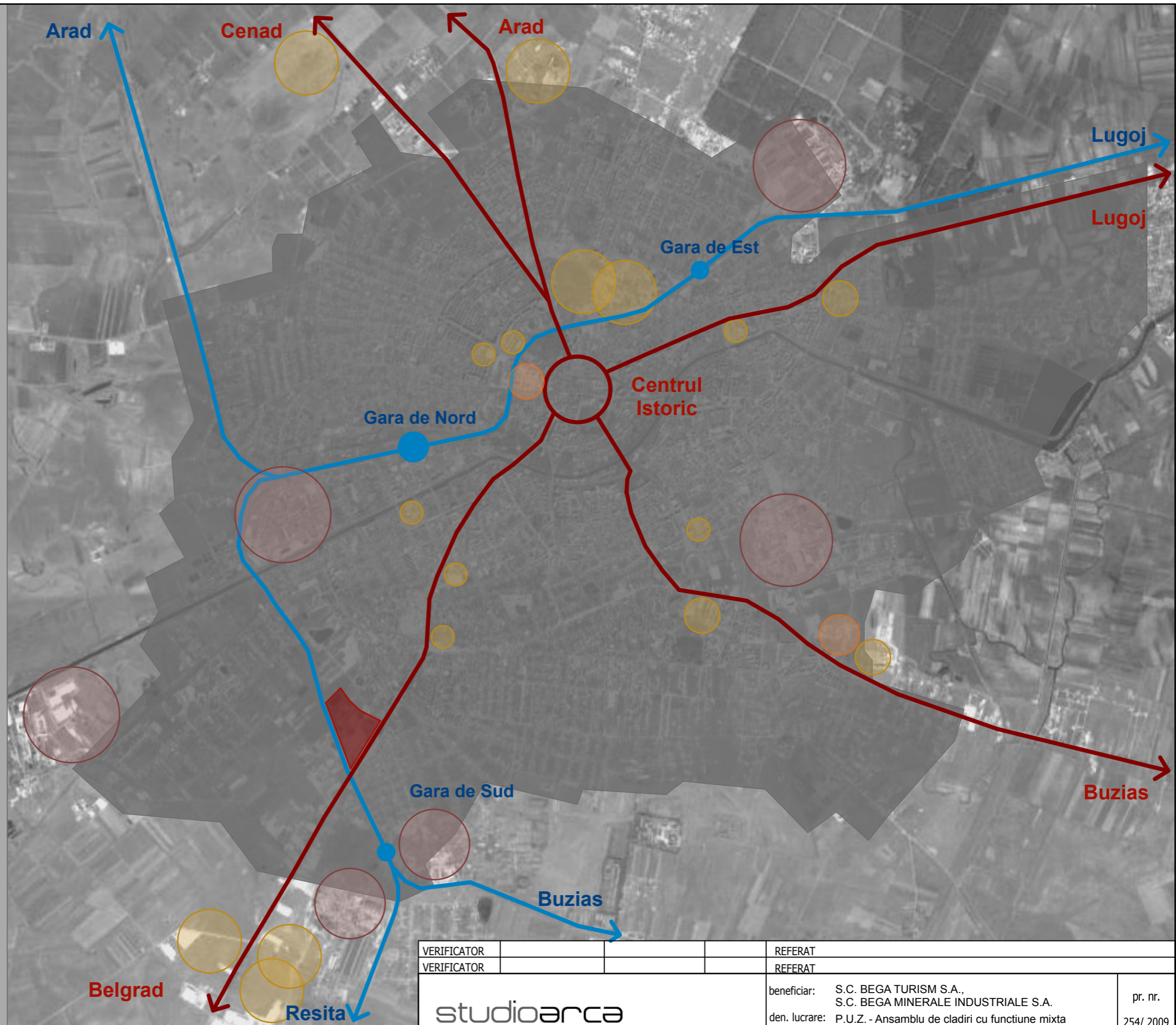


# 01 incadrare in teritoriu



## Legenda

-  Zona studiata
- Circulatii**
-  Rute auto principale
-  Trasee cale ferata
-  Statii de cale ferata
- Funciuni**
-  Zone comerciale
-  Zone industriale
-  Zone cladiri de birouri
-  Funciune predominanta locuire



VERIFICATOR				REFERAT			
VERIFICATOR				REFERAT			
<b>studioarca</b> <small>Timisoara, strada Memorandului nr.93, tel/fax 0256/294218, J35/234/99, e-mail office@studioarca.ro</small>				beneficiar:	S.C. BEGA TURISM S.A., S.C. BEGA MINERALE INDUSTRIALE S.A.	pr. nr.	
				den. lucrare:	P.U.Z. - Ansamblu de cladiri cu functiune mixta		254/ 2009
				adresa:	Calea Sagului, Nr. 100,104,106,110		
SEF PROIECT	arh. Radu GOLUMBA			plansa: INCADRARE IN TERITORIU	faza		
PROIECTAT	arh. Radu GOLUMBA		scara 1:2000		P.U.Z.		
	arh. Mihaela RUSULET						
DESENAT	arh. Mihaela RUSULET		IUL 2011		pl.		
	arh. Luminita RUSAN			nr. 01A			
VERIFICAT	arh. Claudiu OPRITA						

PUZ DERMATINA