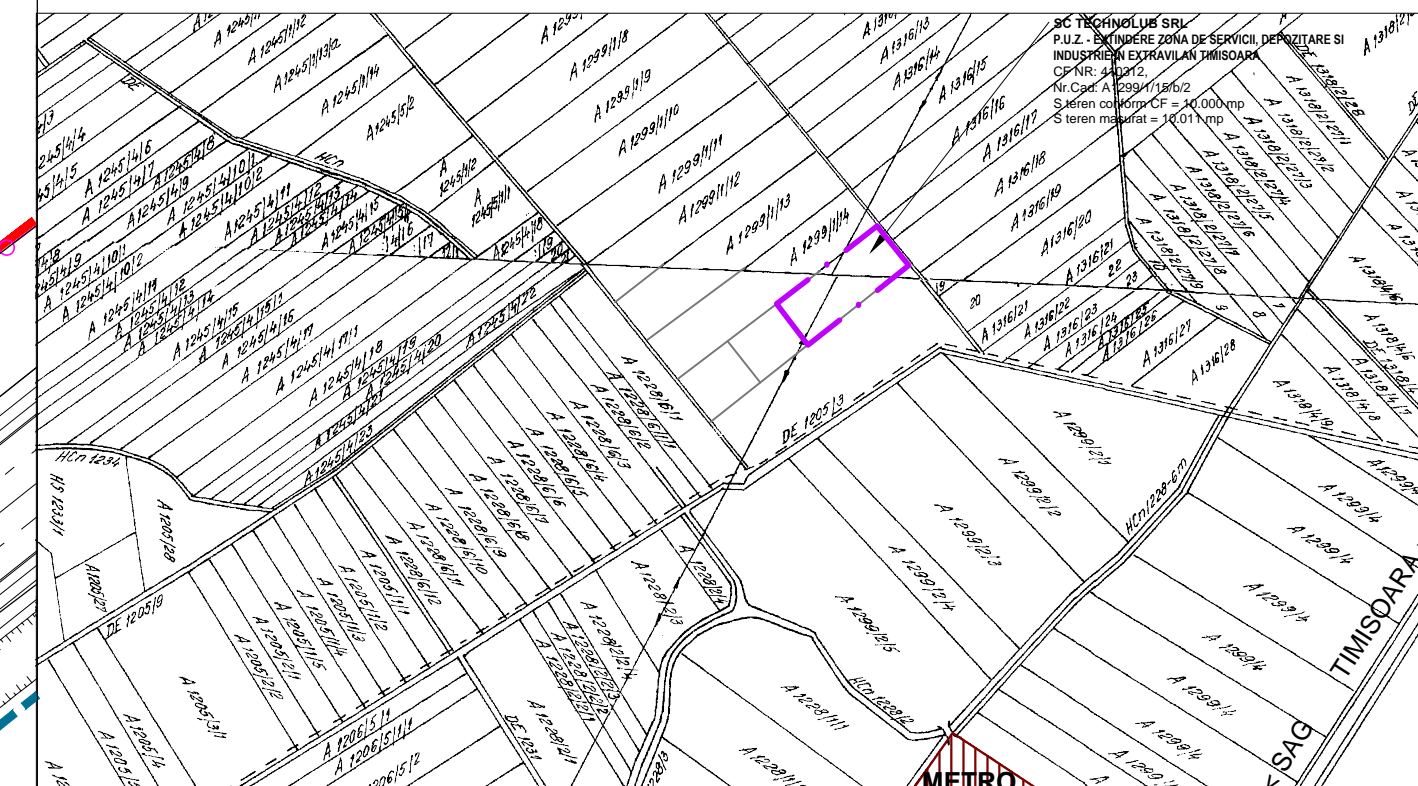
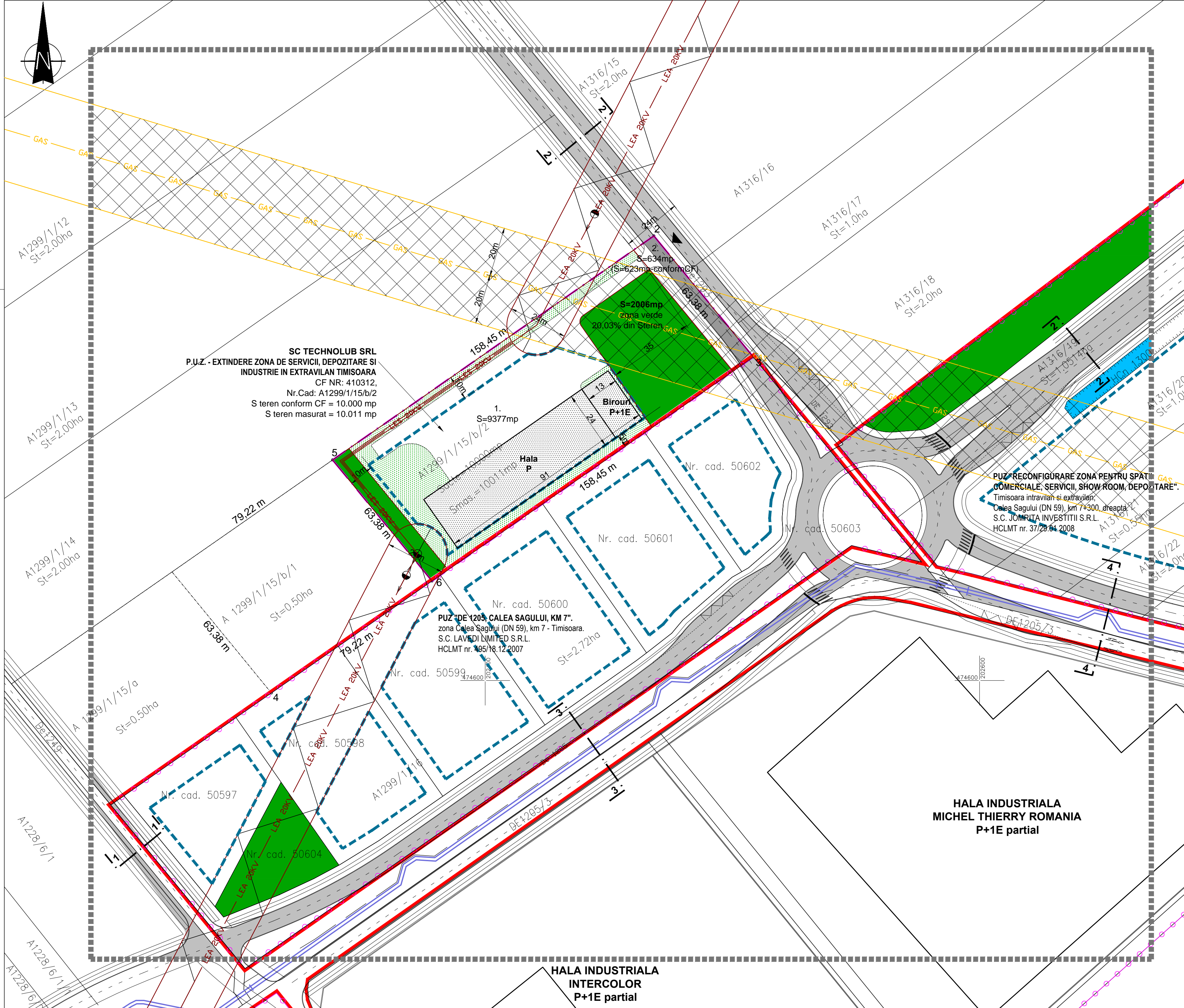
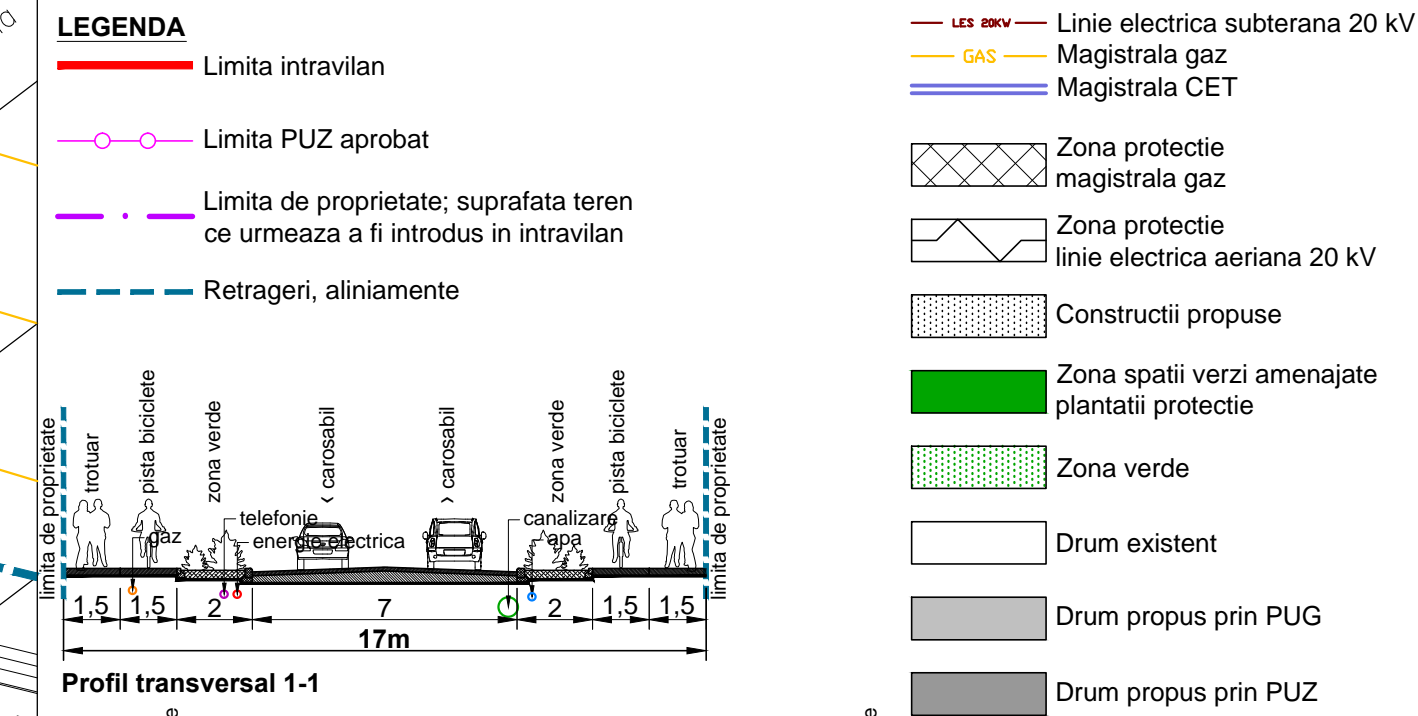


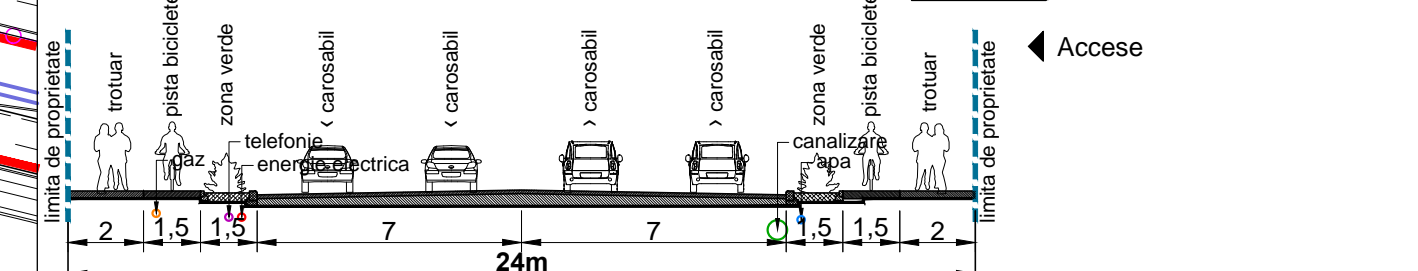
## PROPUNERI DE MOBILARE ETAPA II



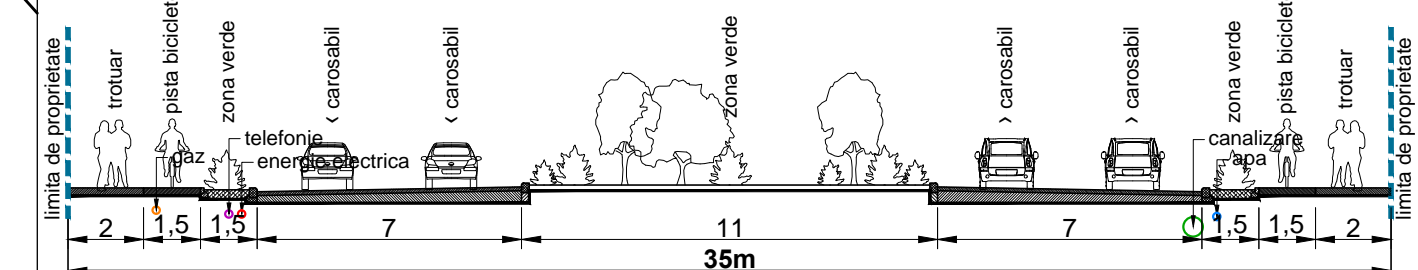
### PLAN DE INCADRARE IN LOCALITATE sc 1:10000



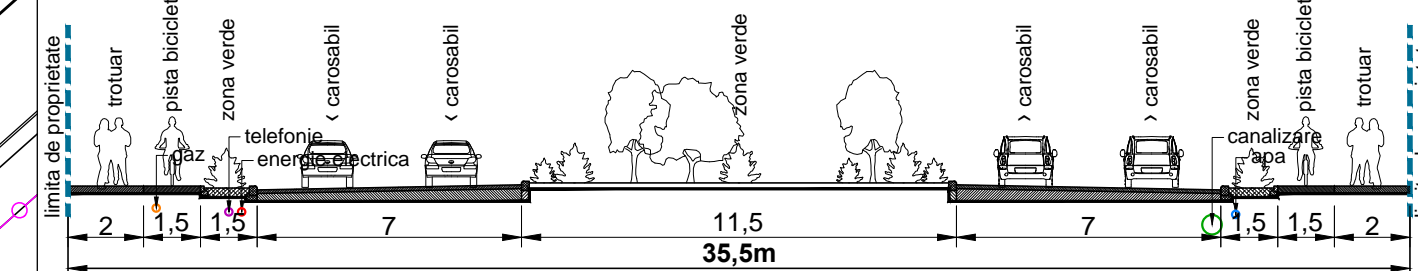
**Profil transversal 1-1**



**Profil transversal 2-2**



**Profil transversal 3-3**



**Profil transversal 4-4**

<b>SC SIREGON GRUP SRL</b> B-cul S. P. Haidou, Nr. 21, Timisoara Telefon: +40264 493071, Fax: +40262 778655 e-mail: proiectare@siregon.ro, web: www.siregon.ro		Denumire proiect: <b>P.U.Z. - EXTINDERE ZONA DE SERVICII, DEPOZITARE SI INDUSTRIE IN EXTRAVILAN TIMISOARA</b>		Proiect Nr.: 9066/2009
Sef Proiect: arh. HENT Sorin Proiectat: arh. HENT Sorin Proiectat: arh. TRIF Vlad		Beneficiar: <b>SC TECHNOLUB SRL</b>		Faza: P.U.Z.
SCARA: 1:1000		Denumire planșă: <b>PROPUNERI DE MOBILARE ETAPA II</b>		Nr. Planșă: 005a/1

**SC TECHNOLUB SRL**  
 P.U.Z. - EXTINDERE ZONA DE SERVICII, DEPOZITARE SI INDUSTRIE IN EXTRAVILAN TIMISOARA  
 CF NR: 410312,  
 Nr.Cad: A1299/1/15/b/2  
 S teren conform CF = 10.000 mp  
 S teren masurat = 10.011 mp

**PUZ DE 1205, CALEA SAGULUI, KM 7".**  
 zona Calea Sagului (DN 59), km 7 - Timisoara.  
 S.C. LAVEDI LIMITED S.R.L.  
 HCLMT nr. 195/18.12.2007

**PUZ RECONFIGURARE ZONA PENTRU SPATII COMERCIALE, SERVICII, SHOW ROOM, DEPOZITARE.**  
 Timisoara intravilan si extravilan.  
 Calea Sagului (DN 59), km 7+300, dreapta  
 S.C. JOMRITA INVESTITII S.R.L.  
 HCLMT nr. 37/28.04.2008

**HALA INDUSTRIALA MICHEL THIERRY ROMANIA P+1E partial**

**HALA INDUSTRIALA INTERCOLOR P+1E partial**