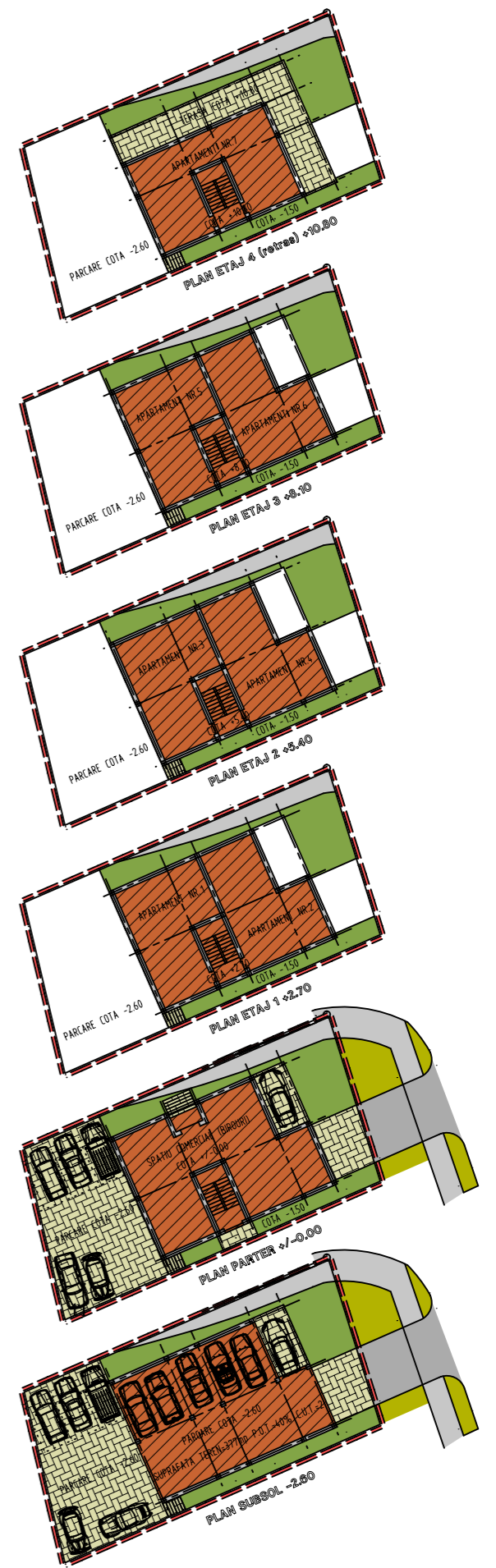
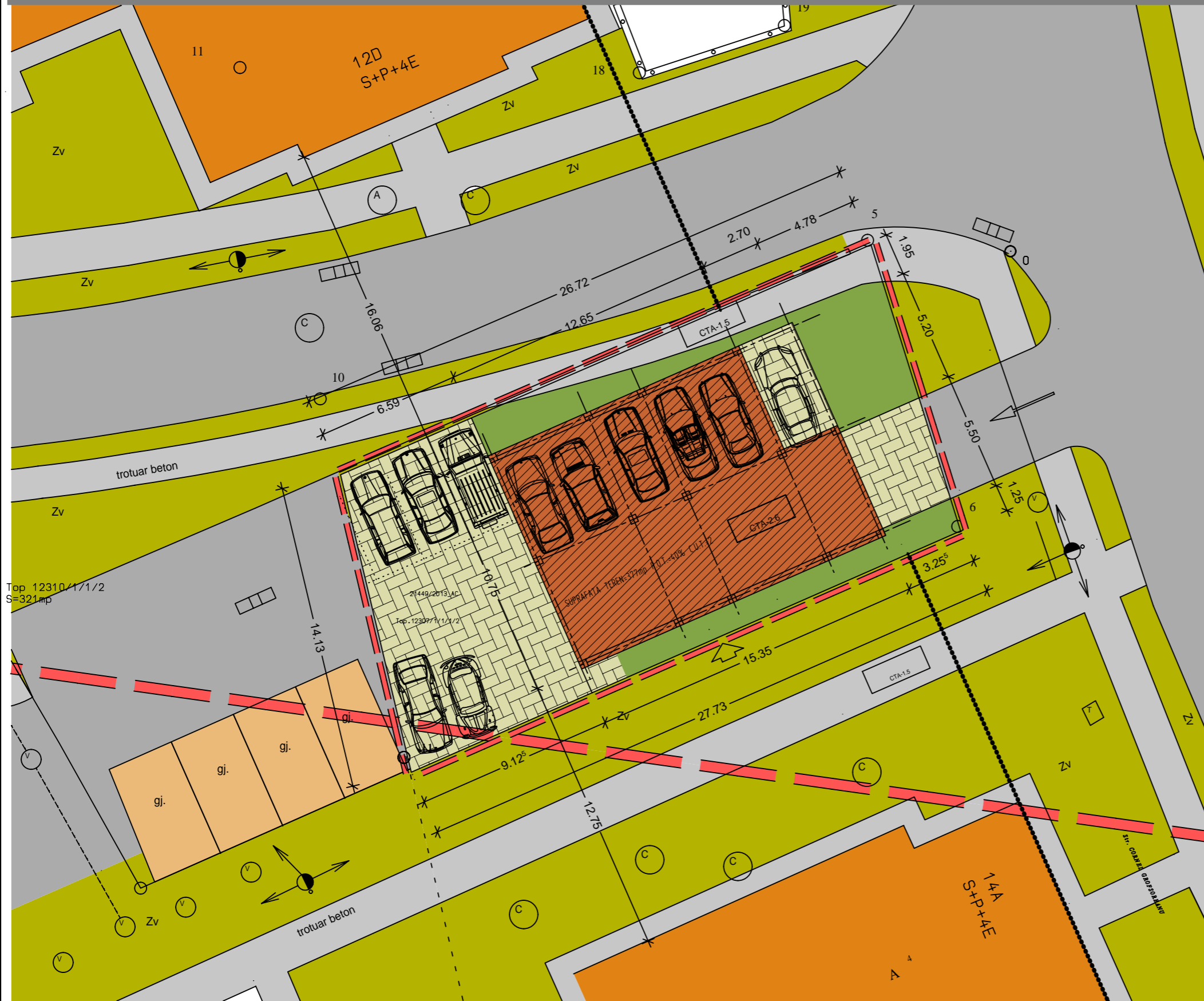
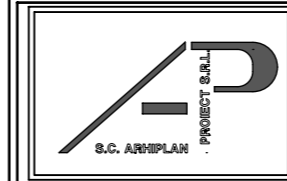


PLAN URBANISTIC DE DETALIU "CLADIRE LOCUINTE, SPATII COMERCIALE, SERVICII, BIROURI S+P+4E - ZONA ODOBESCU" - TIMISOARA
 PLAN MOBILARE



Top 12310/1/1/2
 S=321mp

Top 12307/1/1/2/2



VERIFICAT	arh. ALIDEIA SUCIU
PROIECTAT	arh. REMUS BALAN
DESENAT	arh. REMUS BALAN

BENEFICIAR	fam. ARBACH OTILIA, ARBACH GHIATH
OBIECT	P.U.D.- Cladire Locuinte, Spatii comerciale, Servicii, Birouri Timisoara - zona Odobescu
PLANSA	PLAN MOBILARE

PR.NR	075/2014
SCARA	1/200
PL.NR.	U-4

h/l= 297.0 / 420.0 (0.12mp)

Allplan 2006