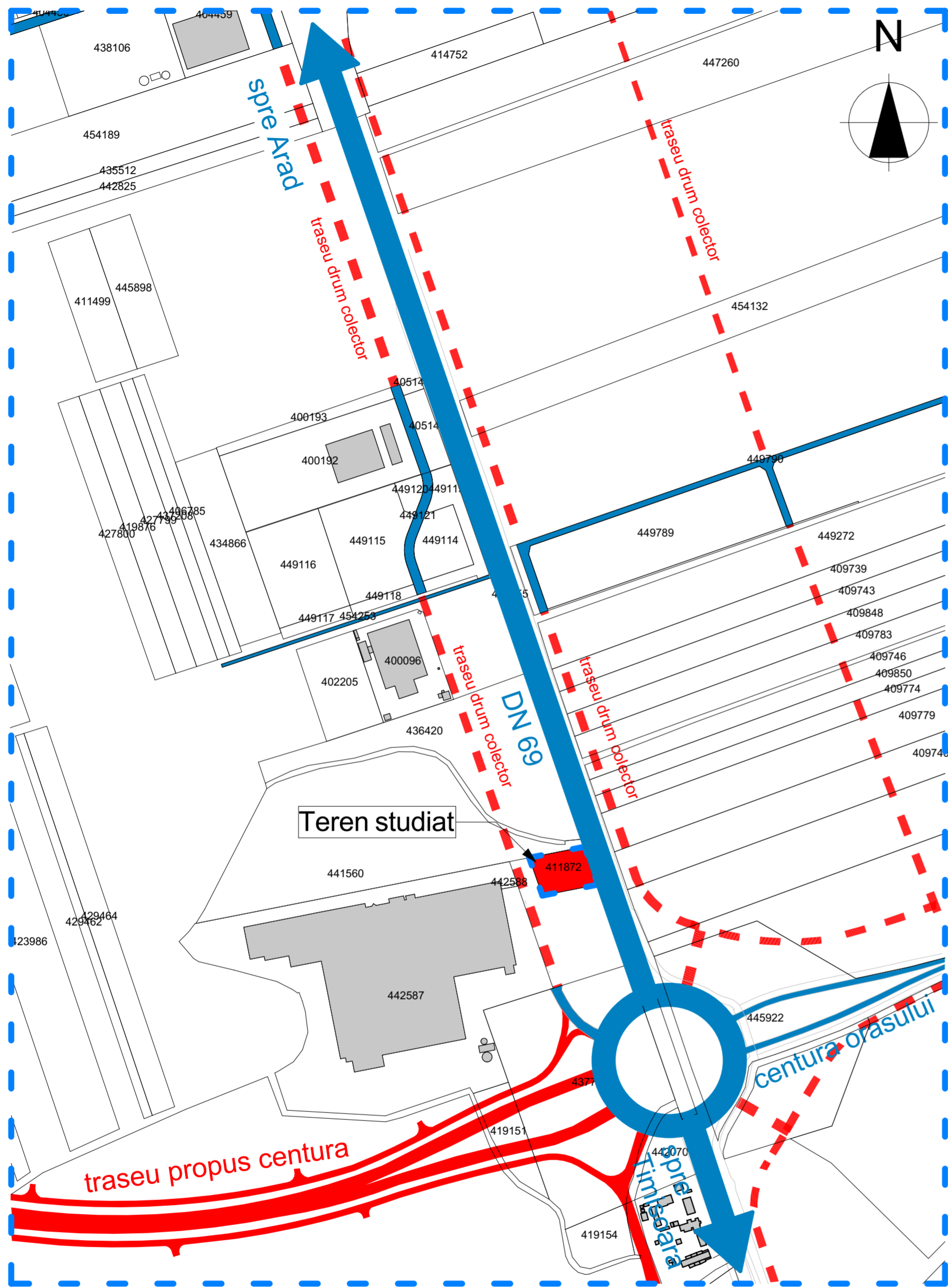
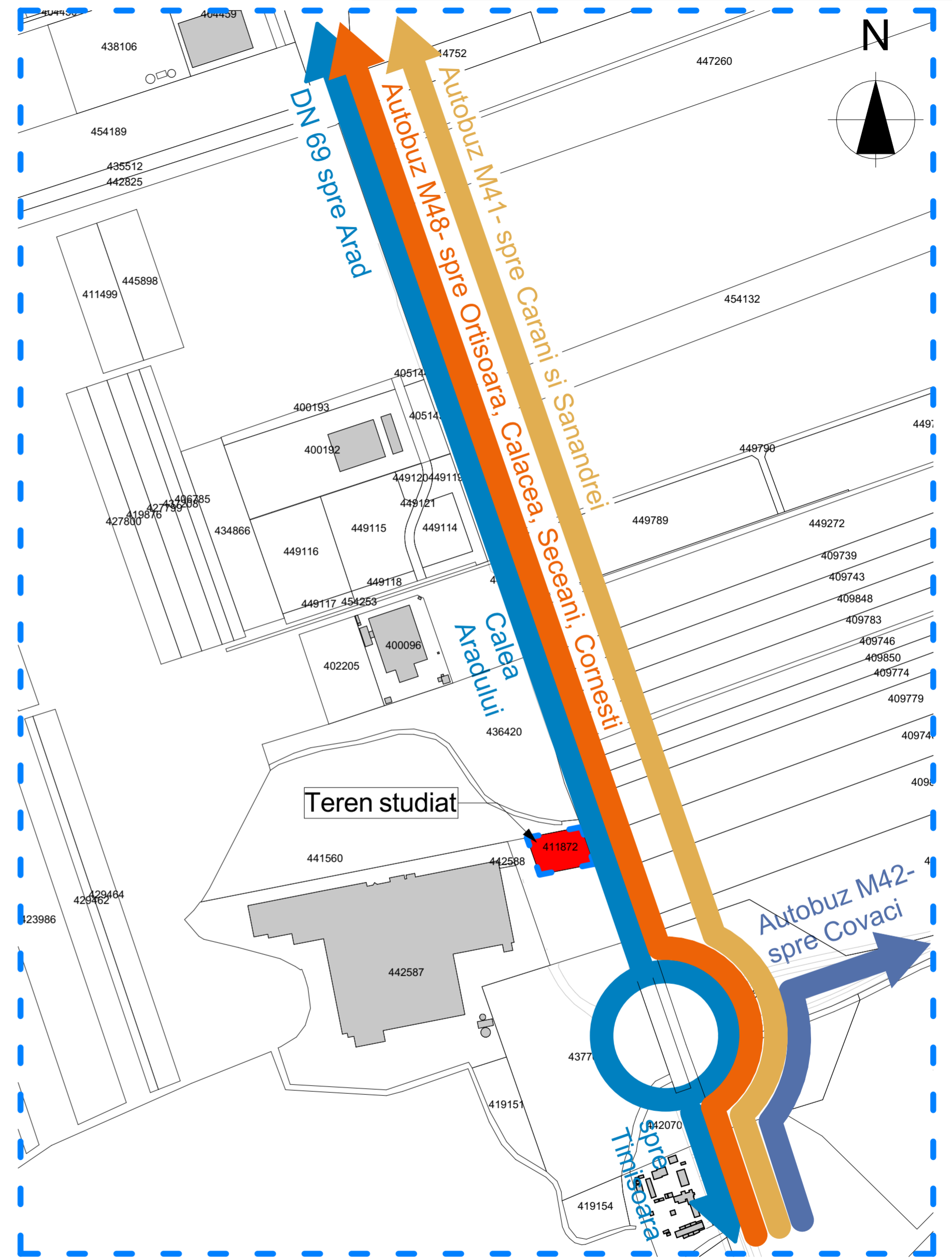


PUZ - AMPLASARE STATIE DISTRIBUTIE CARBURANTI COMPUSA DIN CLADIRE, MAGAZIN, SPALATORIE CU AUTOSERVIRE, COPERTINA POMPE, REZERVOARE CARBURNATI, SKID GPL, TERASA ACOPERITA, TOTEM PRETURI, IMPREJMUIRE, PARCAJE IN PLATFORME BETONATE SI RACORD LA DRUM


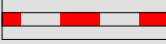





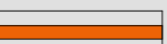
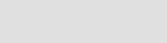
PLAN CIRCULATII EXISTENTE SI TRASEE PROPUSE NEREGLEMENTATE
SC. 1: 500



PLAN CIRCULATII EXISTENTE CU LINIILE DE MIJLOACE DE TRANSPORT IN COMUN
SC. 1: 500

LEGENDA:

-  drumuri existente
-  trasee propuse, nereglementate prin PUZ
-  teren studiat
-  cladiri existente

-  ruta autobuz M42 - din Timisoara din statia Banatim pana in localitatea Covaci
-  ruta autobuz M48 - din Timisoara din statia Banatim pana in localitatile Cornesti, Calacea, Seceani, Ortisoara
-  ruta autobuz M41 - din Timisoara din statia Banatim pana in localitatile Carani si Sanandrei

VERIFICAT				Raport de expertiza Referat de verificare
	J 35/ 555/ 2005 TIMISOARA str. Suceava nr. 13 tel. 0729 151113 tel. 0256 430856			Adresa: mun. Timisoara, identificat prin CF 411872, jud. Timis Beneficiar: SC LUKOIL ROMANIA SRL Titlu proiect: Amplasare statie distributie carburanti compusa din cladire, magazin, copertina pompe, rezervoare carburanti, skid GPL, terasa acoperita, totem preturi, imprejmuire, parcaje in platforme betonate si racord la drum
MANAGER PROIECT arh. MIRON Darius				Proiect nr.: AU 085/2022
SEF PROIECT arh. PRUNICI Ion, urb. CRETU Emanuel				Faza: Studiu de oportunitate
PROIECTAT urb. stag. arh. IVANOVICI Natalia				Titlu plansa: PLAN STUDIU CVARTAL-CIRCULATII
DESENAT urb. stag. arh. IVANOVICI Natalia				Plansa nr.: U.06
			Scara: 1:5000	
			Data: 10/2022	